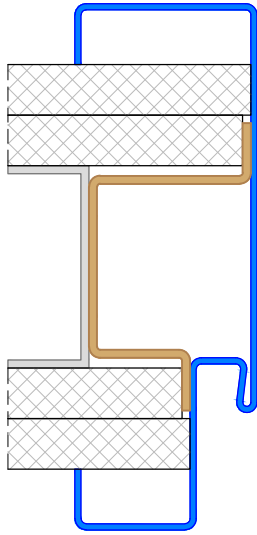
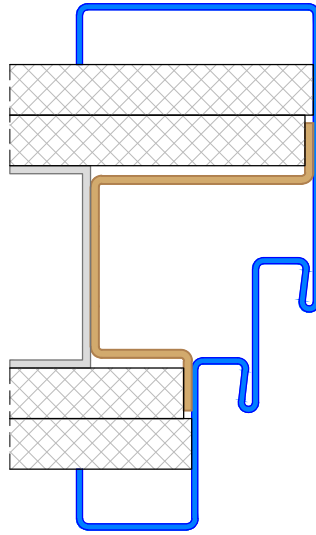


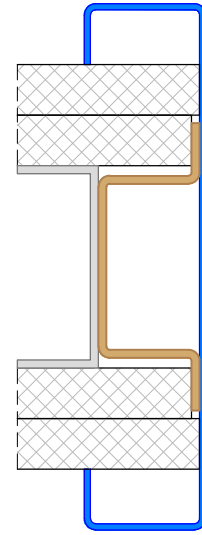
# Befestigungsvarianten



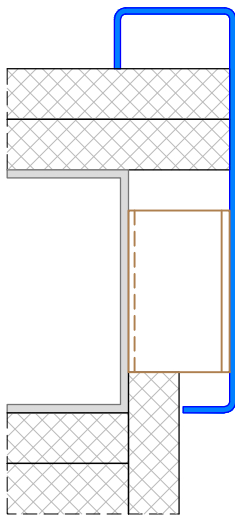
Hutanker  
Lasche 460 Typ 1,2,3



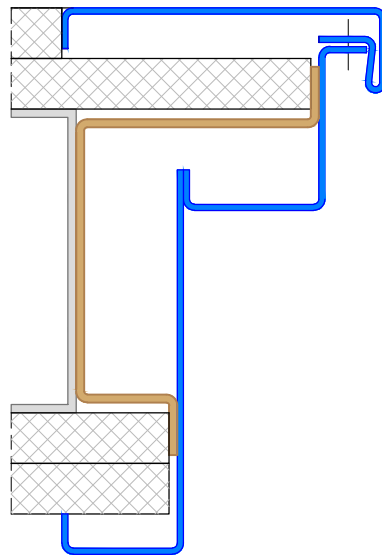
Hutanker  
Lasche 460 Typ 1b,2b,3b



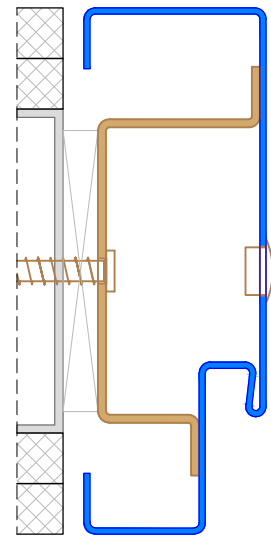
Hutanker  
Lasche 460 Typ 1a,2a,3a



Hutanker  
gedreht eingebaut



Sonderhutanker



Hutanker  
mit Bohrung